
Practical aspects of feedback control

Originally broadcast on January 22, 2004



Bob Krause

Applications Engineering Manager
Optoelectronic Business Unit
Fairchild Integrated Circuits Group, ICG

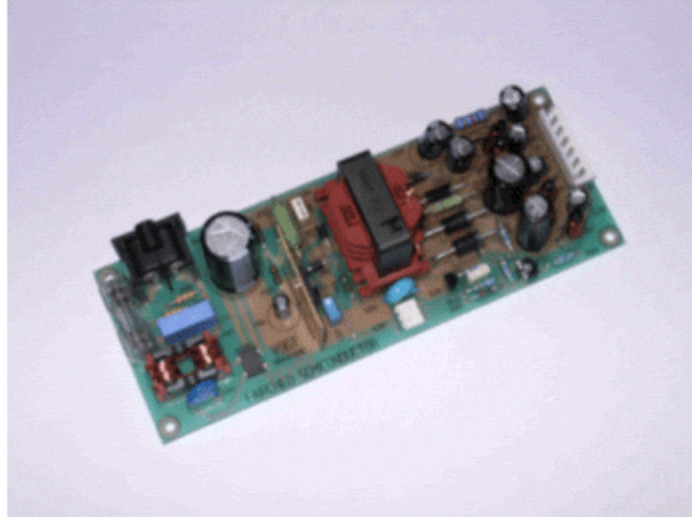
Presentation Overview:

This webcast explains design considerations when using an optically isolated error amplifier as the voltage feedback device in an off-line switch mode power supply. Using a practical example, the primary focus is on understanding what determines the frequency response of the feedback control system, with the goal of ensuring control loop stability and acceptable transient response in an isolated power supply.

About the Presenter:

Bob Krause is the Applications Engineering Manager of the Optoelectronic Business Unit of Fairchild Integrated Circuits Group, ICG. During Bob's thirty years of optoelectronic experience he has held applications management positions at the optoelectronic divisions of Hewlett Packard, General Instruments, Siemens, Infineon, and Vishay. He is a holder of 8 US patents, has authored numerous trade articles, and design application notes, plus is co-author of text book "Optoelectronics – Fiber Optic Applications Manual"

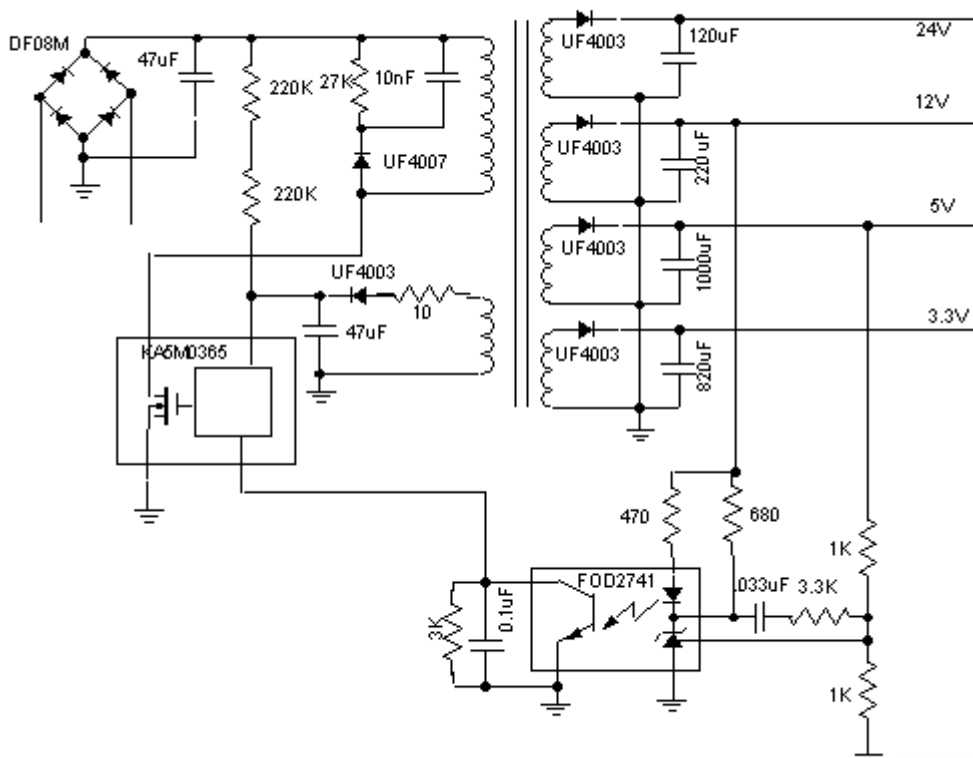
Practical design of FPS Feedback Control



Analogue Discrete Interface & Logic Optoelectronics



FPS Multi-output Flyback Schematic



Analogue Discrete Interface & Logic Optoelectronics

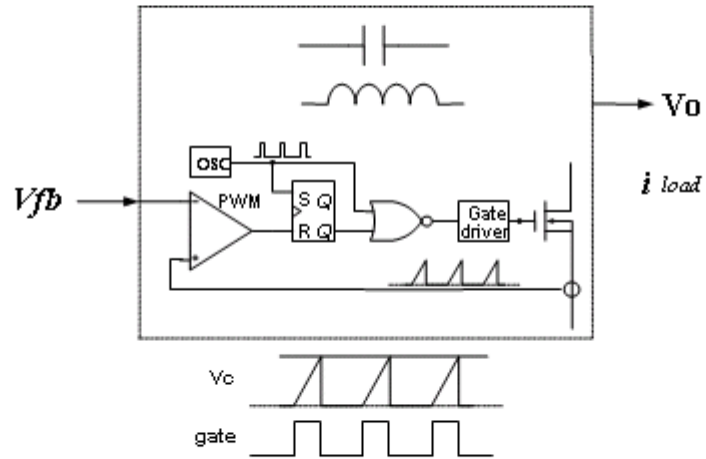


OUTLINE – SMPS Feedback Control

1. **Control Loop Elements**
 - **Controller**
 - **Feedback Amplifier**
2. **DC Isolation Amplifier Operation**
 - **DC Gain Analysis**
 - **AC Frequency Analysis**
3. **Error Amplifier Operation**
 - **DC Gain analysis**
 - **AC Response**
4. **Open & Closed Loop Measurement**
 - **Techniques**
 - **Results**

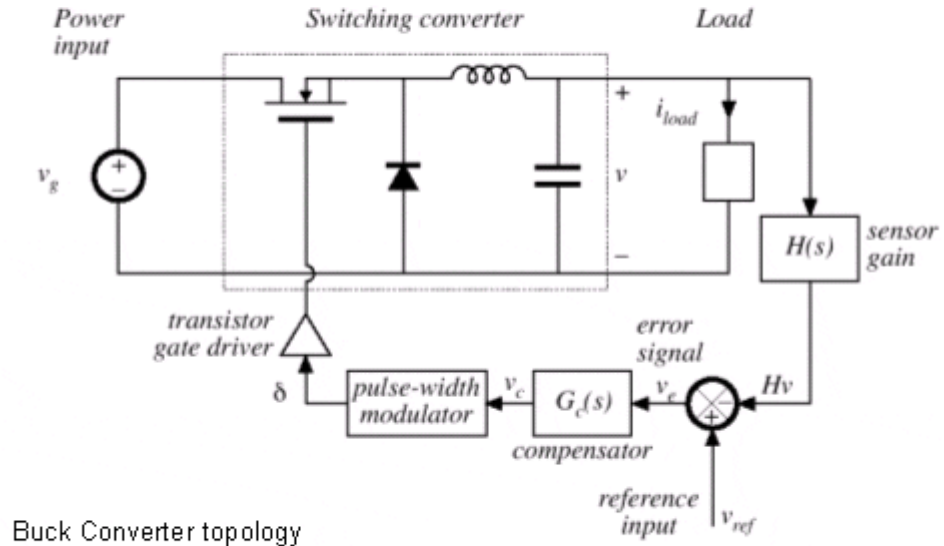
Current mode converter – FPS- KA5M10365

Switching converter



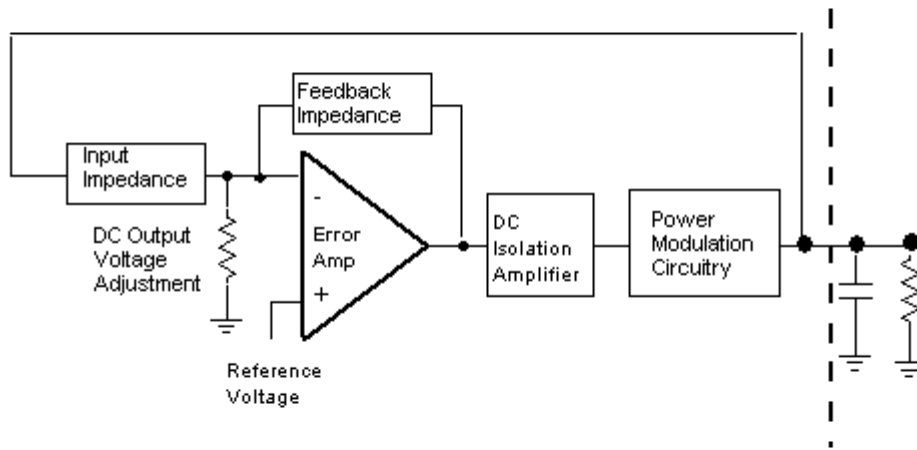
FPS - How does it work?

A walk around the loop



Buck Converter topology

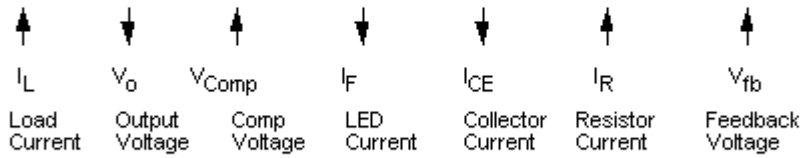
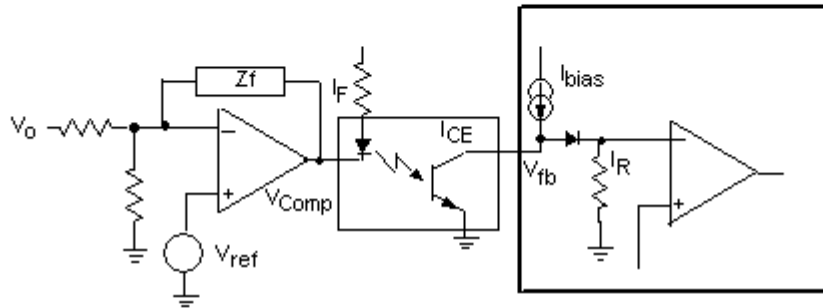
SMPS Feedback Amplifier



Feedback Amplifier includes DC Isolation Amplifier, and the Voltage Error amplifier.

How does it work?

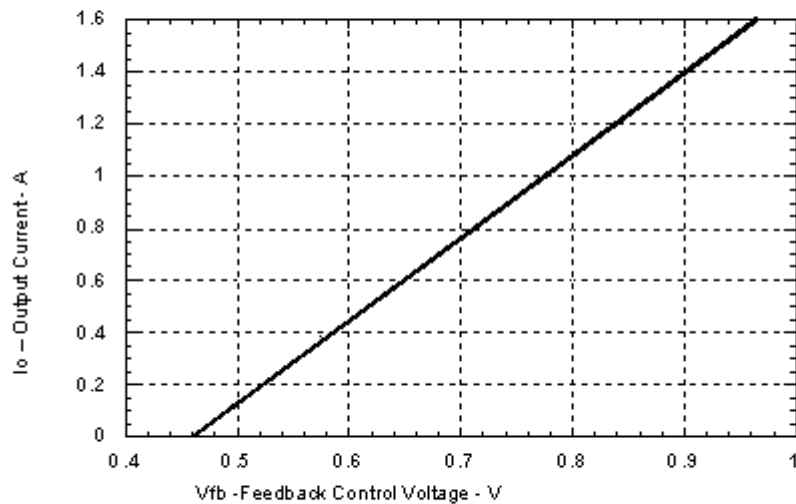
A walk around the Feedback loop



Analogue Discrete Interface & Logic Optoelectronics



KA5M0365 DC Feedback Control

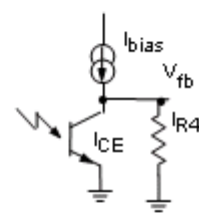
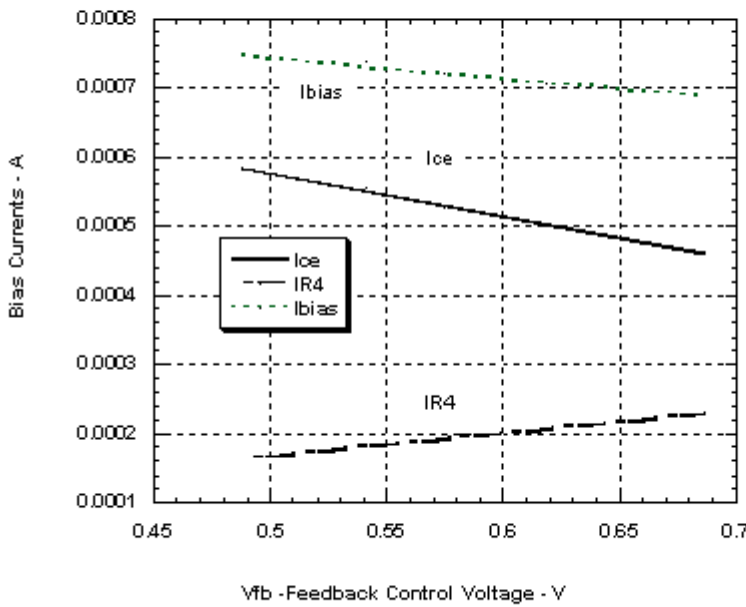


These represent the DC transfer curves for the KA5M0365 when the supply is providing a constant 5 volt output.

Analogue Discrete Interface & Logic Optoelectronics



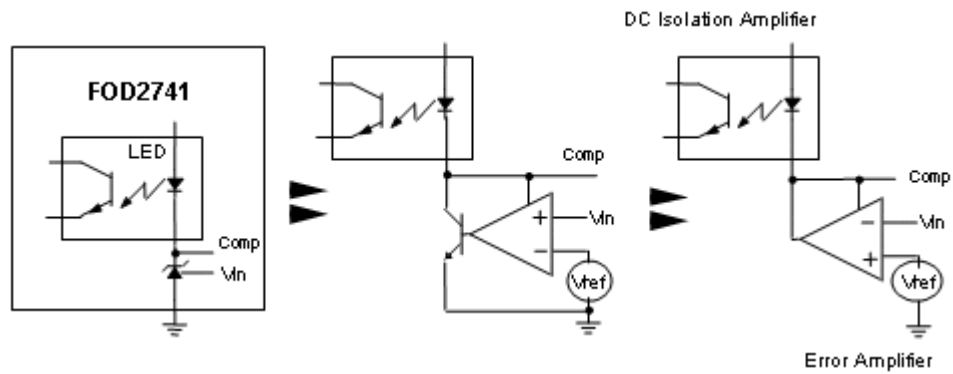
Feedback Voltage vs Control Current



Optical Coupled Precision Voltage Reference

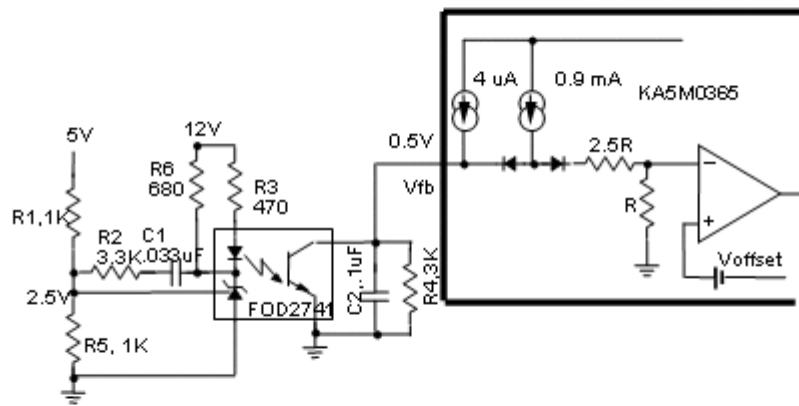
Fairchild's FOD2741
Simplifies Design with an Error Amplifier, Precision Reference, and Optocoupler in a Single Package

Feedback Amplifier FOD2741 Composition



The FOD2741/2 consists of adjustable precision zener diode and a phototransistor optocoupler. Typical Current gain, CTR, is 60% for an $I_F = 1\text{ mA}$, and $V_{ce} = 0.5\text{ V}$. The device offers a $2.5\text{ V} \pm 1\%$ bandgap reference, a 60dB (OLG) 1 MHz(BW/P) differential amplifier.

Feedback Amplifier Interconnection



The resistor and capacitor values shown are used throughout the following analysis. These are used in the demo board supporting the KA5M0365

Analog Discrete Interface & Logic Optoelectronics



Stability

– Gain Margin, Phase Margin and band width

Gain Margin

Gain is changed according to the variation of circuit components

Related to robustness against gain variation

Phase Margin

Related to the damping of the system.

Low PM causes oscillatory transient response

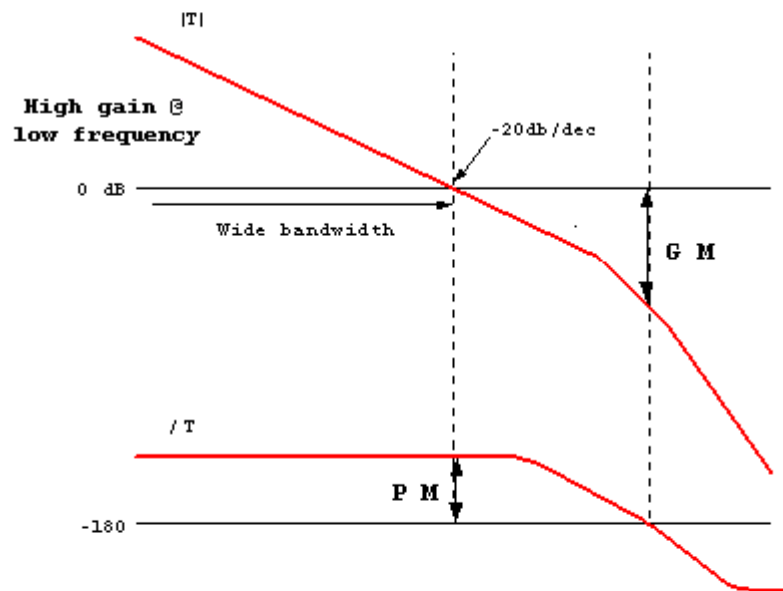
Bandwidth

Related to the speed of transient response

Analog Discrete Interface & Logic Optoelectronics



Stability – Desired loop gain characteristics



Feedback Amplifier Types

Each of these amplifier types offer different levels of Phase boost in the Feedback amplifier. Increasing the phase and gain margin is the key task of the feedback amplifiers compensation function

Type 1 Single Pole – No phase boost

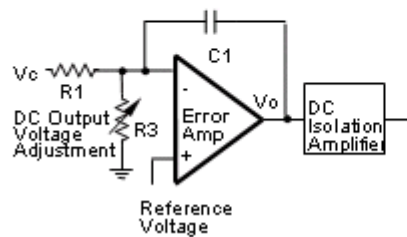
Type 2 Two poles, 1 zero Up to 90 degrees

Type 3 Two Poles, 2 zeros Up to 180 degrees

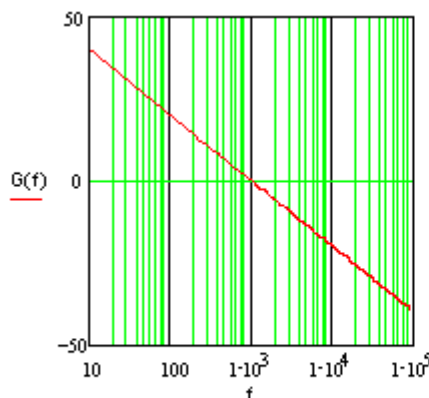
Analog Discrete Interface & Logic Optoelectronics



Type 1 Compensation Circuit



Phase shift = 90 degrees



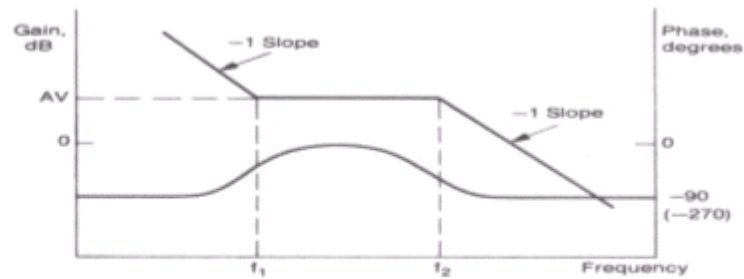
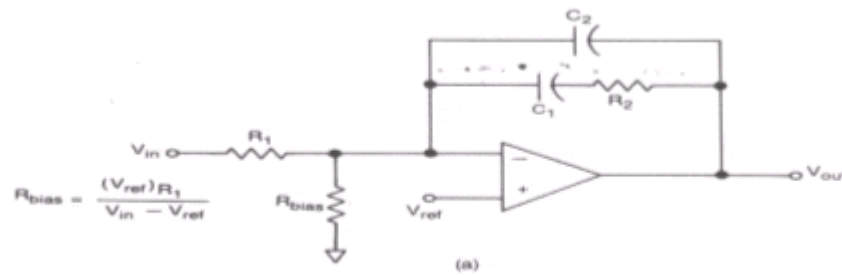
$$G(f) := 20 \cdot \log \left(\frac{1}{s(f) \cdot C1 \cdot R1} \right)$$

Analog Discrete Interface & Logic Optoelectronics

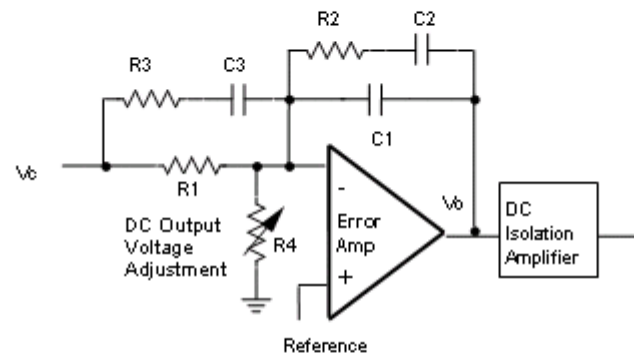


Type 2 Gain and Phase Boost

$$G(f) := 20 \cdot \log \left[\frac{(R_2 \cdot s(f) \cdot C_1 + 1)}{(s(f) \cdot (R_1 \cdot (R_2 \cdot s(f) \cdot C_1 \cdot C_2 + C_2 + C_1)))} \right]$$



Type 3 Schematic



$$G(f) = 20 \cdot \log \left[\frac{(R2 \cdot s(f) \cdot C1 + 1)}{(s(f) \cdot ((R2 \cdot s(f) \cdot C1 \cdot C2 + C2 + C1) \cdot (R1 \cdot (R3 \cdot s(f) \cdot C3 + 1))))} \cdot (R1 \cdot s(f) \cdot C3 + R3 \cdot s(f) \cdot C3 + 1) \right]$$

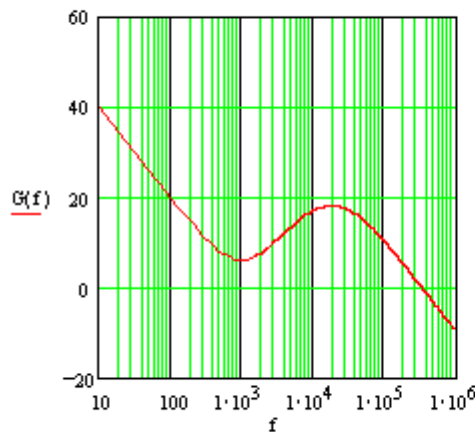
[Analog](#)
[Discrete](#)
[Interface & Logic](#)
[Optoelectronics](#)



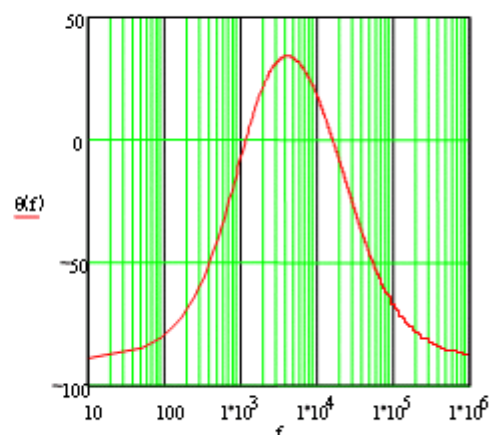
TYPE 3 Bode Plot

$$G(f) = 20 \cdot \log \left[\frac{(R2 \cdot s(f) \cdot C1 + 1)}{(s(f) \cdot ((R2 \cdot s(f) \cdot C1 \cdot C2 + C2 + C1) \cdot (R1 \cdot (R3 \cdot s(f) \cdot C3 + 1))))} \cdot (R1 \cdot s(f) \cdot C3 + R3 \cdot s(f) \cdot C3 + 1) \right]$$

Frequency Response



Phase Response



[Analog](#)
[Discrete](#)
[Interface & Logic](#)
[Optoelectronics](#)



DC Isolation Amplifier

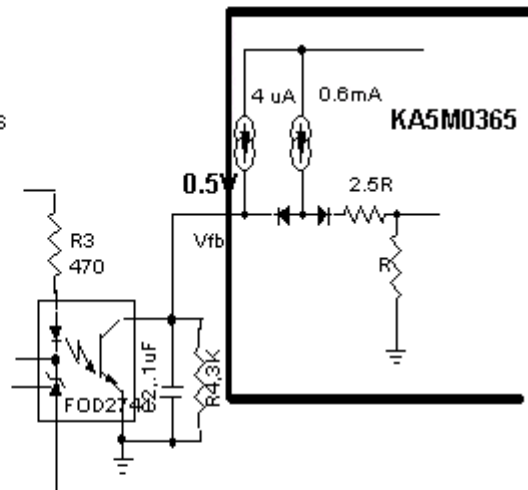
The feedback voltage, V_{fb} , is found at the node composed of the input of the controller, the phototransistor's collector, and the low pass filter (R4 and C2). The KA5M0365 offers an internal current source, I_{bias} , measured to be 600 μA . This is used to develop the control voltage V_{fb} . The nodal equation is:

$$0 = I_{bias} - I_{ce} - I(Z2)$$

I_{ce} is the phototransistor's collector emitter current

$I(Z2)$ is the current through the parallel combination of R4 and C2.

$$s(f) = j\omega = j2\pi f$$



DC Isolation Amplifier

The feedback voltage, V_{fb} , is found at the node composed of the input of the controller, the phototransistor's collector, and the low pass filter (R4 and C2). The KA5M0365 offers an internal current source, I_{bias} , measured to be 600 μA . This is used to develop the control voltage V_{fb} . The nodal equation is:

$$0 = I_{bias} - I_{ce} - I(Z2)$$

I_{ce} is the phototransistor collector emitter current

$I(Z2)$ is the current through the parallel combination of R4 and C2.

$$Z2(f) := \frac{1}{\left(\frac{1}{R4} + s(f) \cdot C2\right)} \longrightarrow Z2(f) := \frac{R4}{(s(f) \cdot C2 \cdot R4 + 1)}$$

Analog Discrete Interface & Logic Optoelectronics



DC Isolation amplifier Gain And Phase Response

$$f := 10, 50..100000$$

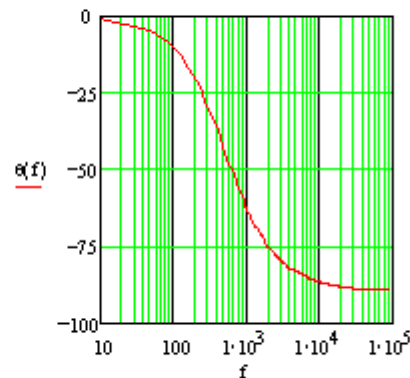
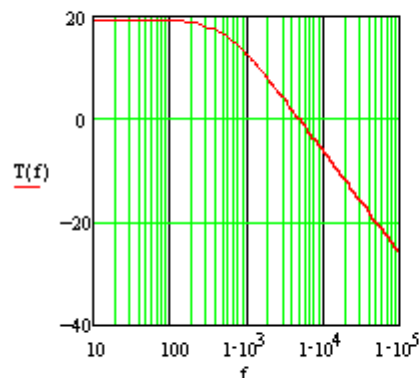
$$s(f) := 2 \cdot \pi \cdot f \cdot j$$

$$IF := .006 \quad I_b := 0.0006 \quad CTR := .60 \quad R4 := 3000 \quad C2 := 0.1 \cdot 10^{-6}$$

$$Z\lambda(f) := \frac{R4}{(s(f) \cdot C2 \cdot R4 + 1)}$$

$$T(f) := 20 \cdot \log((I_b - CTR \cdot IF) \cdot Z\lambda(f))$$

$$\theta(f) := \frac{180}{\pi} \cdot \arg((I_b - CTR \cdot IF) \cdot Z\lambda(f) - 1)$$

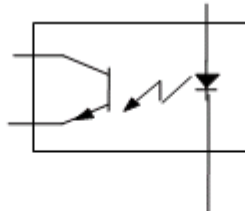


Analog Discrete Interface & Logic Optoelectronics



Optocoupler's Temperature Performance

The DC isolation amplifier includes an Infrared LED and an NPN phototransistor

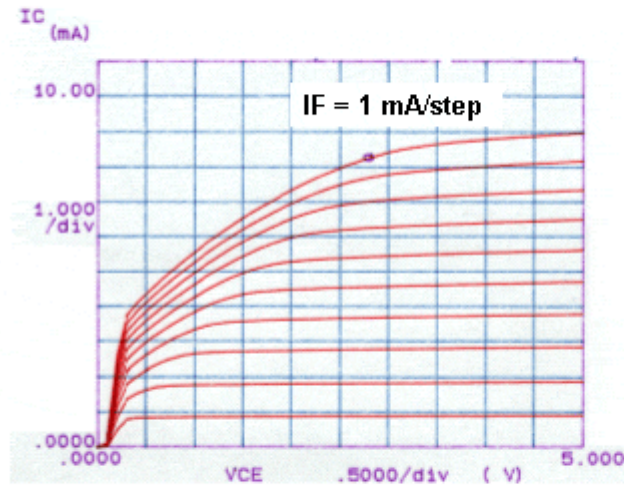


The light output of the LED is temperature dependent, it has a negative temperature coefficient of approximately $-1\%/^{\circ}\text{C}$. Thus as the junction temperature increases the light output will be reduced. The Feedback Amplifier control loop compensates for this drop by increasing the LED current to force the output phototransistor to sink the required I_{ce} to keep the DC output level, V_o , constant.

The phototransistor gain is also temperature dependant. However in the FPS system the device is driven at a low collector emitter voltage ($V_{ce} = 0.3$ to 1V), and small collector current I_{ce} . Under this condition the transistor's gain variation is also compensated by the operation of the Feedback amplifier.

DC gain variation of the DC Isolation Amplifier is insured by adding an additional 6 dB gain margin to the feedback loop.

DC Isolation Amplifier Phototransistor Transfer Family



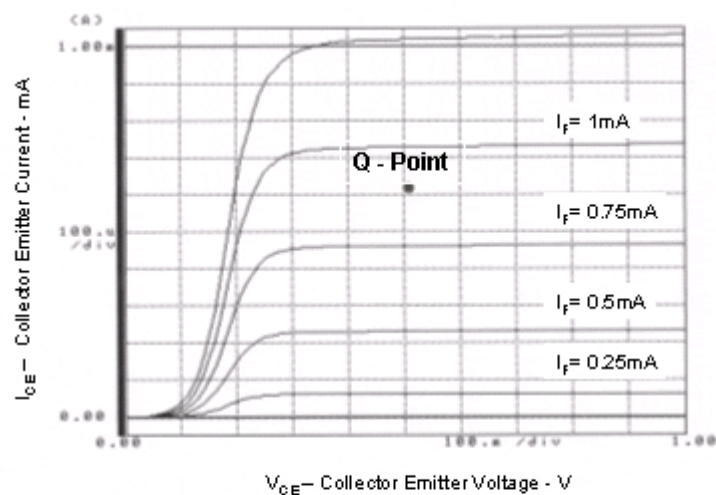
The typical phototransistor is specified with a forward LED of 10 mA and a V_{CE} of 10 V. The KA5M0365 typically operates with a V_{CE} less than 1 V and an I_{CE} of between 500 μ A and 1 mA.

Analogue Discrete Interface & Logic Optoelectronics



Low Current Characteristic of FOD274X

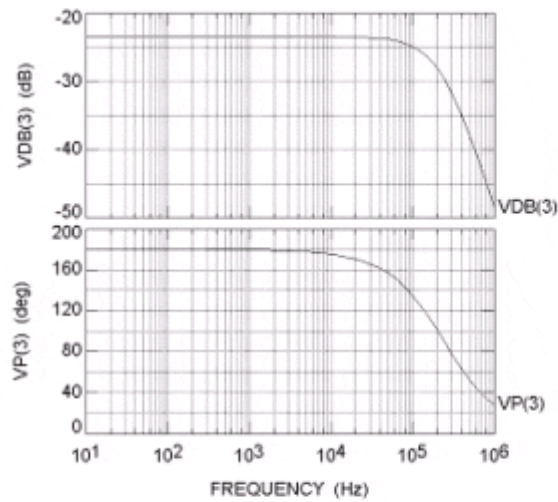
Q-point : $I_{CE} = 570\mu\text{A}$, $V_{CE} = 0.493\text{V}$, $I_F = 860\mu\text{A}$, $\text{CTR}_{CE} = 66\%$



Analogue Discrete Interface & Logic Optoelectronics

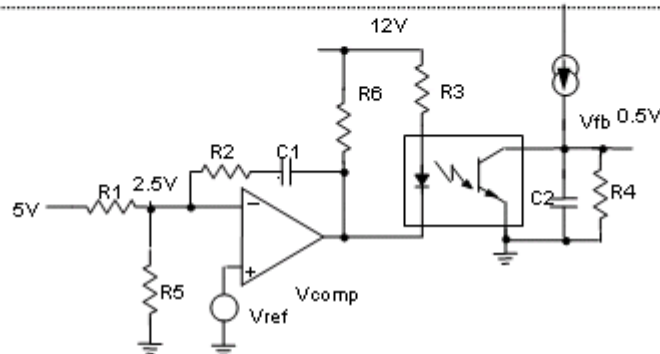


Frequency and Phase Response of the FOD274X's Phototransistor



These two curve point out the small signal Frequency and phase response of the phototransistor found in the FOD274X family.

Error Amplifier Operation



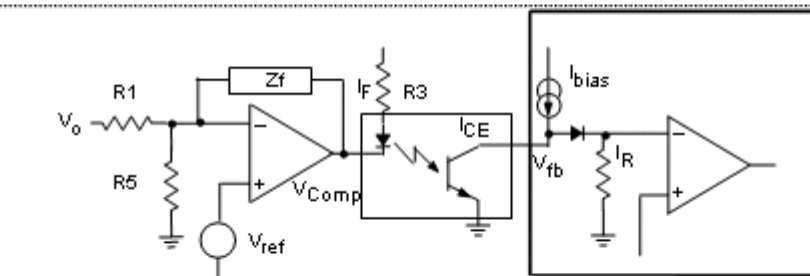
The error consists of the operational amplifier, a compensation network R2 and C1, the voltage reference, voltage divider used to set the supply voltage (R1 & R5), and the coupler current gain setting resistor R3. The resistor R6 functions as a zener bias source.

The circuit evaluated was set for an operational voltage of 5V. Given that the reference is 5V, $R1 = R5$. The precise resistor values are determined from the compensation design process.

The LED current , I_F , is determined by the error amplifier output voltage , V_{comp} , divided by R3.

The error amplifier offers a low frequency 180 degree phase shift, Thus as the supply voltage sags under load The V_{comp} rises, resulting in a reduction in LED current . A reduction in LED current causes a lower phototransistor I_{ce} .

Error Amplifier Gain



$$\frac{V_{comp}(f)}{V_o} := \frac{Zf(f)}{R1}$$

$$Zf \quad \begin{array}{c} R2 \\ \text{---} \\ C1 \end{array}$$

$$Zf(f) := R2 + \frac{1}{s(f) \cdot C1}$$

$$Zf(f) := \frac{(R2 \cdot s(f) \cdot C1 + 1)}{(s(f) \cdot C1)}$$

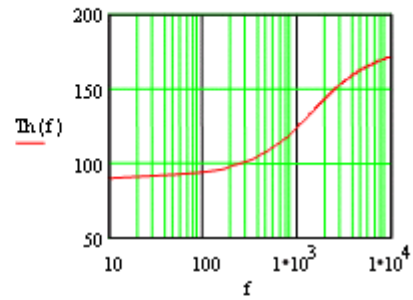
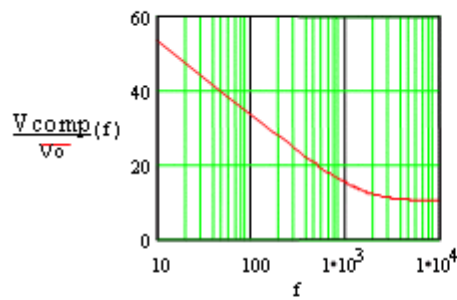
$$\frac{V_{comp}}{V_o}(f) := \frac{R2 \cdot s(f) \cdot C1 + 1}{R1 \cdot s(f) \cdot C1}$$

$$\frac{V_{comp}(f)}{V_o} := \frac{(R2 \cdot s(f) \cdot C1 + 1)}{(s(f) \cdot (C1 \cdot R1))}$$

Error Amplifier Gain and Phase

$$\frac{V_{comp}(f)}{V_o} := 20 \cdot \log \left[\frac{(R2 \cdot s(f) \cdot C1 + 1) \cdot -1}{(s(f) \cdot (C1 \cdot R1))} \right]$$

$$\text{Th}(f) := \frac{180}{\pi} \cdot \text{arg} \left[\frac{(R2 \cdot s(f) \cdot C1 + 1) \cdot -1}{(s(f) \cdot (C1 \cdot R1))} \right]$$



Feedback Amplifier response

1. Feedback Amplifier Gain

$$V_{\text{comp}}(f) := - \frac{Z_{\text{f}}(f) \cdot V_{\text{o}}}{R_1}$$

V_{comp} is the output of the error amplifier
 V_{o} is output voltage of the power supply and the input to the error amplifier

$$Z_{\text{f}}(f) := R_2 + \frac{1}{s(f) \cdot C_1}$$

$$Z_{\text{f}}(f) := \frac{(R_2 s(f) C_1 + 1)}{(s(f) \cdot C_1)}$$

$$\frac{V_{\text{comp}}}{V_{\text{o}}}(f) := - \frac{R_2 s(f) \cdot C_1 + 1}{R_1}$$

$$\frac{V_{\text{comp}}}{V_{\text{o}}}(f) := \frac{(R_2 s(f) \cdot C_1 + 1)}{(s(f) \cdot (C_1 R_1))}$$

2. LED current, I_{F}

$$I_{\text{F}}(f) := \frac{V_{\text{comp}}(f)}{R_3}$$

Feedback Amplifier Response- Error Amplifier and DC Isolation Amplifier

LED Current as a function of the Error Amplifier output signal

$$I_{\text{F}}(f) := \frac{-(R_2 s(f) \cdot C_1 + 1) \cdot V_{\text{o}}}{(s(f) \cdot (C_1 (R_1 R_3)))}$$

Load network of the DC isolation Amplifier

$$Z_{\text{L}}(f) := \frac{R_4}{(s(f) \cdot C_2 R_4 + 1)}$$

Feedback Voltage at the output of the DC Isolation Amplifier

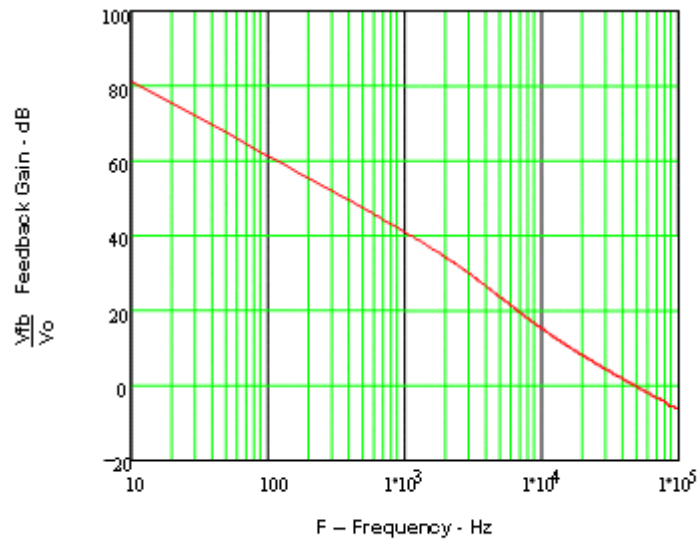
$$V_{\text{fb}}(f) := (I_{\text{b}} - \text{CTR} I_{\text{F}}) \cdot Z_{\text{L}}(f) \quad \text{CTR} = .6$$

Final transfer function of the Feedback Amplifier

$$\frac{V_{\text{fb}}}{V_{\text{o}}}(f) := \left[I_{\text{b}} - \text{CTR} \frac{-(R_2 s(f) \cdot C_1 + 1)}{(s(f) \cdot (C_1 (R_1 R_3)))} \right] \frac{R_4}{(s(f) \cdot C_2 R_4 + 1)}$$

Calculated Feedback Amp Frequency Response

$$\frac{V_{fb}}{V_o}(f) := 20 \log \left[\left(I_b s(f) \cdot C1R1R3 + CTRR2s(f) \cdot C1 + CTRB \cdot \frac{R4}{(s(f) \cdot (C1(R1(R3(s(f) \cdot C2R4 + 1))))} \right) \right]$$

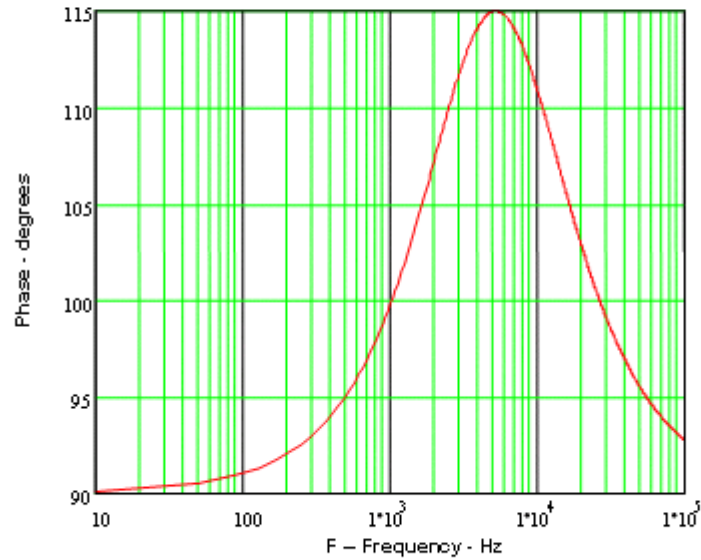


[Analog](#)
[Discrete](#)
[Interface & Logic](#)
[Optoelectronics](#)



Calculated Phase Response – Feedback Amplifier

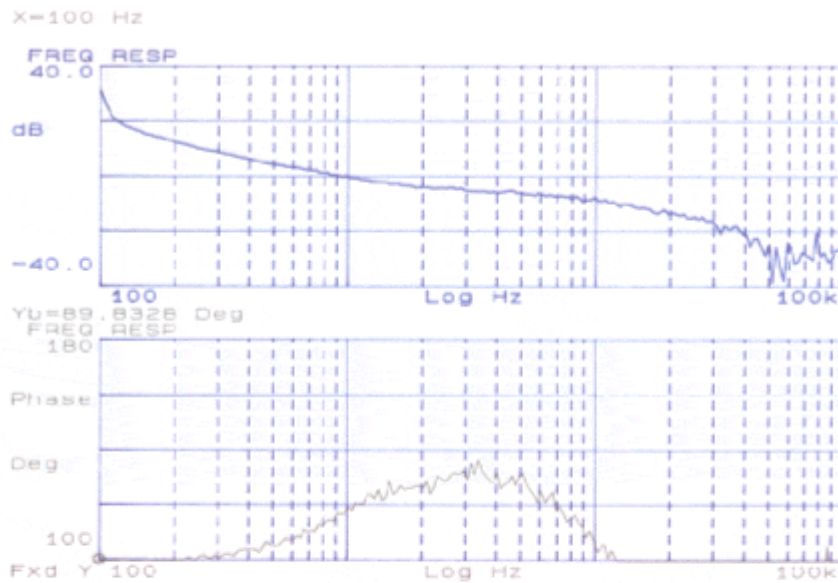
$$\text{Phase}(f) := \frac{-180}{\pi} \cdot \arg \left(\frac{R4}{(\alpha(f) \cdot (C1 \cdot (R1 \cdot (R3 \cdot (\alpha(f) \cdot C2 \cdot R4 + 1))))} \right)$$



Analog Discrete Interface & Logic Optoelectronics



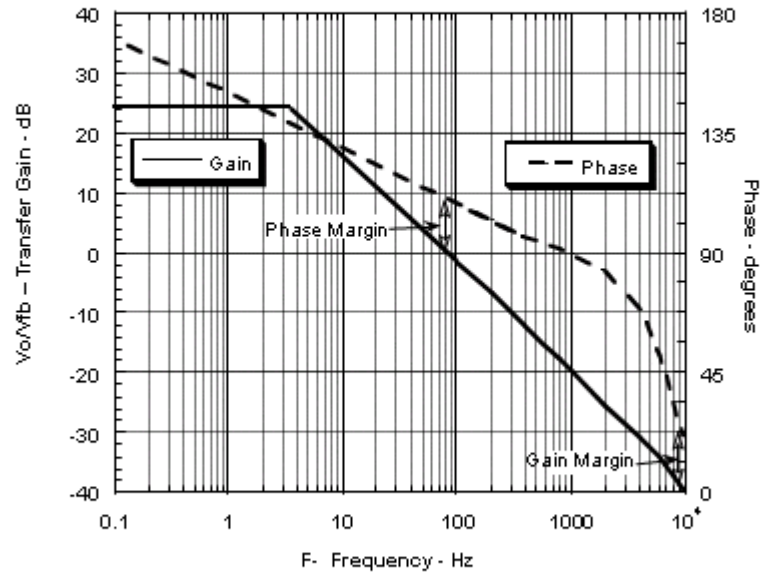
KA5M0365 Feedback Amplifier – Measured



Analog Discrete Interface & Logic Optoelectronics



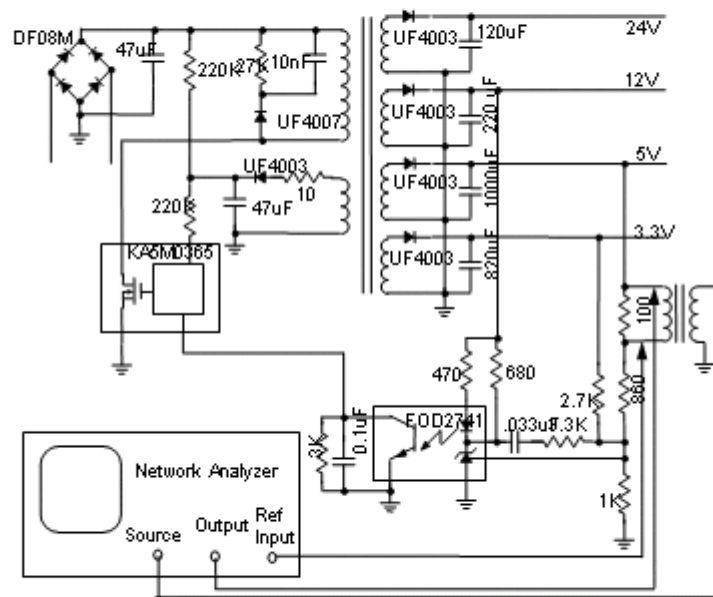
KA5M0365 – Open Loop Response



Analogue Discrete Interface & Logic Optoelectronics



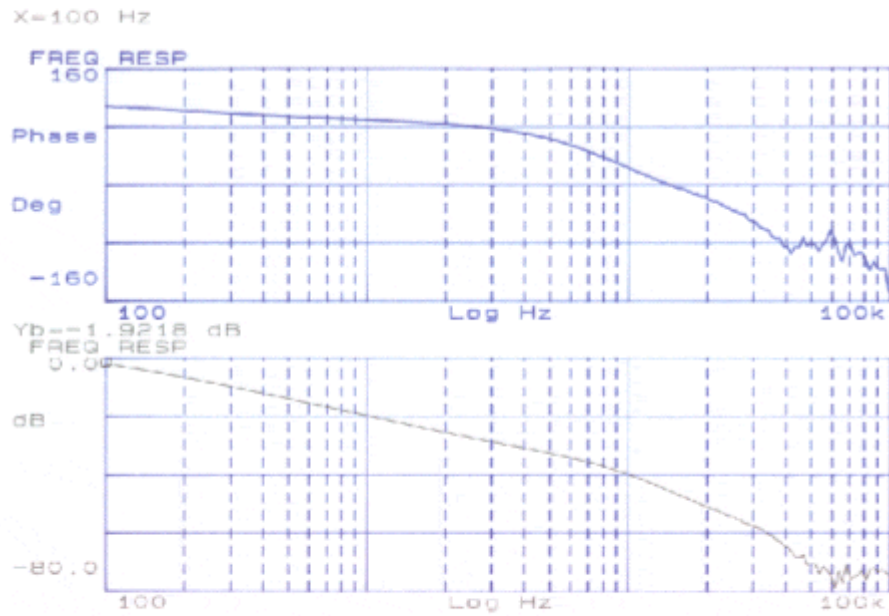
Loop Gain Analysis Test Circuit



Analogue Discrete Interface & Logic Optoelectronics



KA5M0365 –Loop Gain Response



Analog Discrete Interface & Logic Optoelectronics



Join Fairchild for the Entire Power Seminar Webcast Series

Topic	Broadcast Date
Flyback Converters – Fairchild Power Switch	Archived
Practical Aspects of Feedback Control	January 22, 2004
Power Factor Correction	January 29, 2004
DC-DC Solutions (Control)	February 5, 2004
High-Voltage Discrete Technology	February 12, 2004
DC-DC Solutions (MOSFETs)	February 19, 2004
Motor Solutions	February 26, 2004

Register at: <http://www.fairchildsemi.com/power/pwrsemwebcast03.html>

Analog Discrete Interface & Logic Optoelectronics

